



Sulina Road, Brixton, SW2

£930,000

5 bedroom house for sale

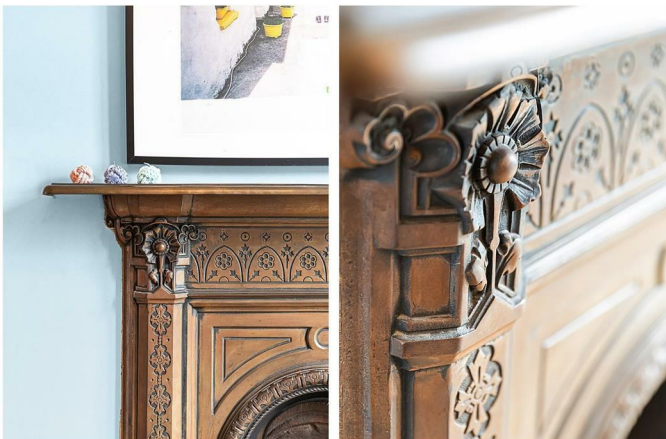
Property Details

On the ground floor, a dual-aspect reception rests immediately at the front of the house, a vast yet cosy spot that makes the ideal family room, entertaining space or indeed anything the purchaser desires. Whilst you have the option of accessing the kitchen via the ground floor hallway, the charming reception also filters through to the impressive rear space, creating a lovely flow throughout the ground floor that continues all the way into the garden. The rear extension has created an attractive kitchen with an abundance of room, completed with a comfortable area to dine or lounge and a trendy breakfast bar/ island. There is plenty of storage and surface space to cook with and a beautifully bright and airy atmosphere thanks to the sky lights and bi-folding doors that allow fresh air to breeze through the room. Arranged over the upper floors, five double bedrooms, all a good size offer an array of benefits. The first floor holds three of these rooms, one spanning the entire width of the house, the further two peacefully positioned overlooking the garden and benefiting from the large family bathroom, complete with separate bath tub and walk in shower. Just up the stair case, A fantastic principal bedroom which is a considerable size, completed with eaves storage and an en-suite. Opposite, the fifth and final room which as a bedroom offers very good dimensions, however this space could be the ideal dressing room, home office or anything else required.

Features

- Five double bedrooms
- South-West facing private garden
- Two bathrooms plus a WC
- Over 1600 square feet of internal space
- Victorian terraced house
- Bright, characterful and airy property
- Ideally located between Brixton, Clapham, Balham and Streatham Hill High Streets
- Variety of local amenities
- Easy access to a wide range of transport links
- Freehold

Council tax band E EPC rating (null)





Sulina Road, Brixton, SW2

Sulina Road



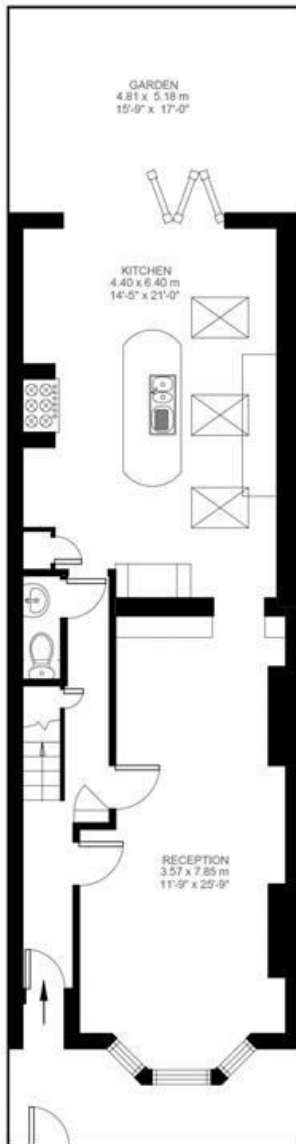
5 Bedroom House

Approx internal area:

1666 sqft 155 sqm

(EXCLUDING EAVES STORAGE)
EAVES STORAGE 6.19 SQ.M / 67 SQ.FT
INCLUSIVE TOTAL AREA 161.19 SQ.M / 1735 SQ.FT

While we do try our very best,
floor plans are produced as a
guide only and we take no
responsibility for the precise
accuracy with which any
property is represented



Ground Floor



First Floor



Second Floor



Sulina Road, Brixton, SW2

